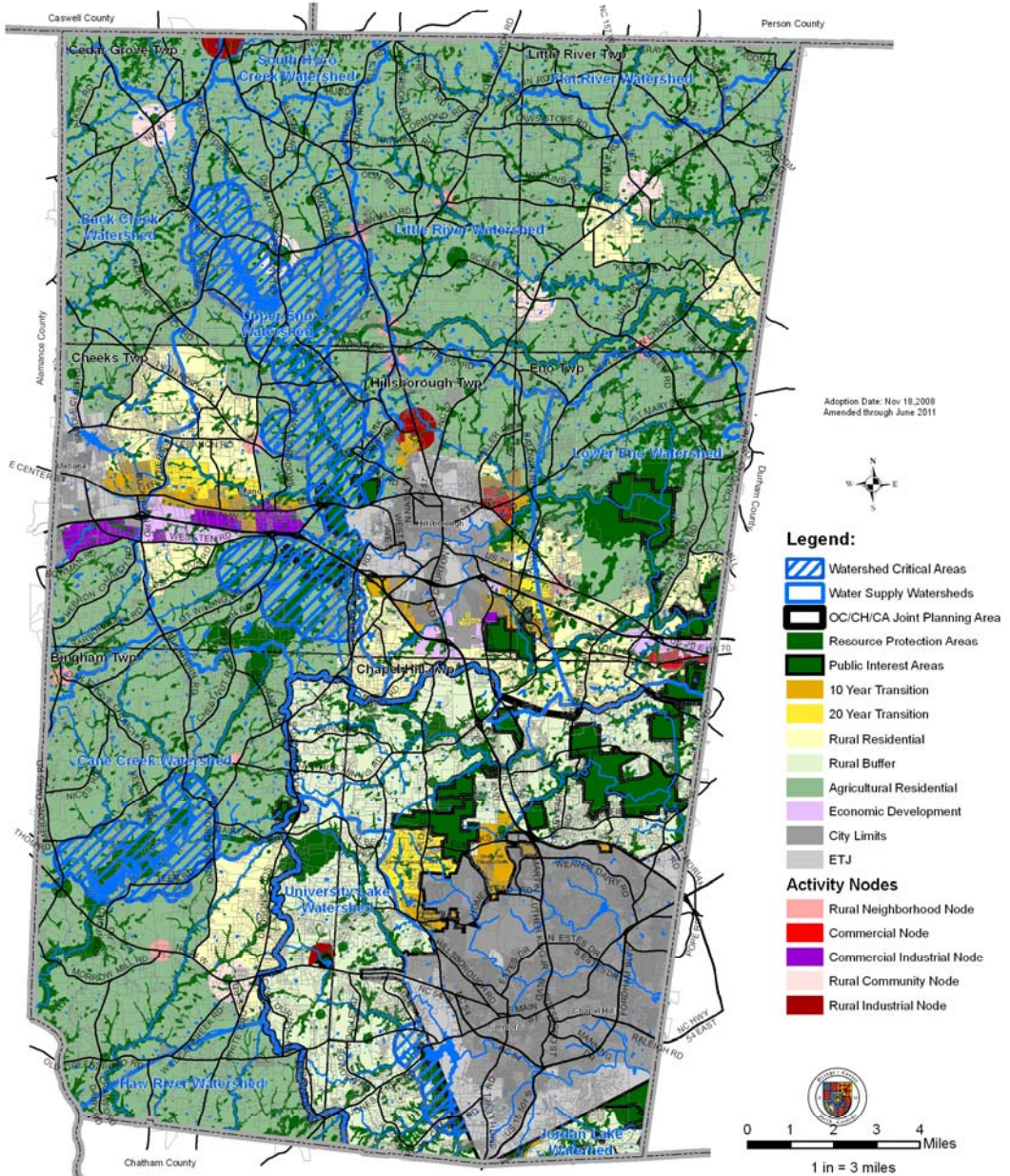


Land Use Element of the Orange County Comprehensive Plan



Adoption Date: Nov 18, 2008
Amended through June 2011

Legend:

- Watershed Critical Areas
- Water Supply Watersheds
- OC/CH/CA Joint Planning Area
- Resource Protection Areas
- Public Interest Areas
- 10 Year Transition
- 20 Year Transition
- Rural Residential
- Rural Buffer
- Agricultural Residential
- Economic Development
- City Limits
- ETJ

Activity Nodes

- Rural Neighborhood Node
- Commercial Node
- Commercial Industrial Node
- Rural Community Node
- Rural Industrial Node



0 1 2 3 4 Miles
1 in = 3 miles