

**ORANGE COUNTY  
BOARD OF COMMISSIONERS**

**ACTION AGENDA ITEM ABSTRACT**

**Meeting Date:** February 17, 2009

**Action Agenda  
Item No.** 4-i

**SUBJECT:** Orange County Landfill Sewer Dedication to OWASA

**DEPARTMENT:** Purchasing

**PUBLIC HEARING: (Y/N)**

**ATTACHMENT(S):**  
OWASA Dedication Form—Sewer Line  
Utility Easement Plat

**INFORMATION CONTACT:**  
Pam Jones, 919-245-2652  
Geof Gledhill, 919-732-2196

**PURPOSE:** To consider dedicating a sewer utility line to the Orange Water and Sewer Authority (OWASA) constructed to serve the Orange County Landfill and Animal Services Facility.

**BACKGROUND:** The County's new sewer line along Eubanks Road that will connect the Landfill and the Animal Services Facility is nearing completion and final commissioning. Part of this commissioning is the normal OWASA request that the County dedicate the built lines to OWASA so they may be properly serviced.

The easement is depicted on the attached Utility Easement Plat. No tree removal within the easement area is required.

**FINANCIAL IMPACT:** None.

**RECOMMENDATION(S):** The Manager recommends the Board approve the dedication to OWASA of a sewer utility line constructed to serve the Orange County Landfill and Animal Services Facility, contingent upon final Attorney review; and authorize the Chair to sign on behalf of the Board.

# Orange Water and Sewer Authority Dedication Form

1/27/09

Orange Water and Sewer Authority  
400 Jones Ferry Road  
Post Office Box 35  
Carrboro, NC 27510

Re: Orange County Landfill Sanitary Sewer

Dear Sirs:

Orange County, North Carolina, the current owner of the public sanitary sewer line, does hereby dedicate and convey unto Orange Water and Sewer Authority, its successors and assigns, all of its right, title and interest in and to the sewer lines constructed in accordance with plans titled "As-built" Plan and Profile, Orange County Landfill Sewer, prepared by Philip Post & Associates dated 1/22/09.

IN WITNESS WHEREOF, this letter is executed by the duly authorized officers of Orange County, North Carolina and its corporate seal to be hereunto affixed, all on the day and year first above written.

Orange County, North Carolina

ATTEST:

By:

\_\_\_\_\_  
Donna S. Baker  
Clerk to the Board of County  
Commissioners

\_\_\_\_\_  
Valerie Foushee  
Chair, County Commissioners

NORTH CAROLINA  
ORANGE COUNTY

I, \_\_\_\_\_, a Notary Public, hereby certify that (Attester) personally appeared before me this day and acknowledged that he is the (Position of Company / Corporation), a corporation, and that by authority duly given as the act of the corporation, the foregoing instrument was signed in its name by its (Title), sealed with its corporate seal, and attested as its Secretary.

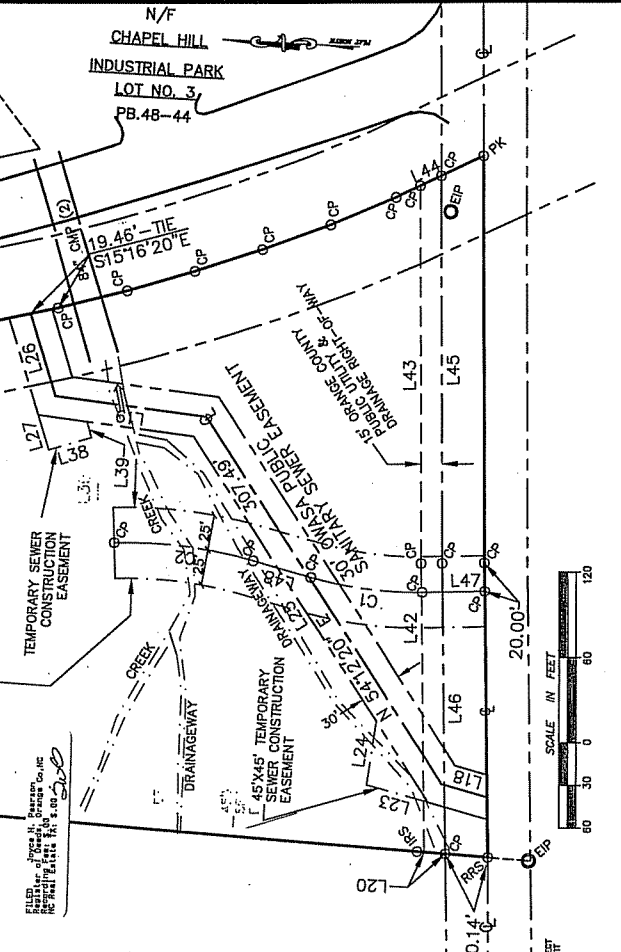
\_\_\_\_\_  
(Notary Public)

My Commission Expires: \_\_\_\_\_

**PHILIP POST & ASSOCIATES**  
 ENGINEERS PLANNERS SURVEYORS  
 401 Providence Rd. # 200  
 Chapel Hill, NC 27514  
 (919) 232-1173  
 493-2500 650-8662  
 (336) 273-7711

**JOHN AND DENH B. TRAN PROPERTY**  
**ORANGE COUNTY PROPERTY EASEMENT MAP**  
 CHAPEL HILL TOWNSHIP  
 ORANGE COUNTY, N.C.

REVISIONS 1. 1/1/2008 ADDED PROPERTY EASEMENT  
 2. 1/1/2008 ADDED PROPERTY EASEMENT  
 3. 1/1/2008 ADDED PROPERTY EASEMENT  
 4. 1/1/2008 ADDED PROPERTY EASEMENT  
 5. 1/1/2008 ADDED PROPERTY EASEMENT  
 6. 1/1/2008 ADDED PROPERTY EASEMENT  
 7. 1/1/2008 ADDED PROPERTY EASEMENT  
 8. 1/1/2008 ADDED PROPERTY EASEMENT  
 9. 1/1/2008 ADDED PROPERTY EASEMENT  
 10. 1/1/2008 ADDED PROPERTY EASEMENT  
 11. 1/1/2008 ADDED PROPERTY EASEMENT  
 12. 1/1/2008 ADDED PROPERTY EASEMENT  
 13. 1/1/2008 ADDED PROPERTY EASEMENT  
 14. 1/1/2008 ADDED PROPERTY EASEMENT  
 15. 1/1/2008 ADDED PROPERTY EASEMENT  
 16. 1/1/2008 ADDED PROPERTY EASEMENT  
 17. 1/1/2008 ADDED PROPERTY EASEMENT  
 18. 1/1/2008 ADDED PROPERTY EASEMENT  
 19. 1/1/2008 ADDED PROPERTY EASEMENT  
 20. 1/1/2008 ADDED PROPERTY EASEMENT  
 21. 1/1/2008 ADDED PROPERTY EASEMENT  
 22. 1/1/2008 ADDED PROPERTY EASEMENT  
 23. 1/1/2008 ADDED PROPERTY EASEMENT  
 24. 1/1/2008 ADDED PROPERTY EASEMENT  
 25. 1/1/2008 ADDED PROPERTY EASEMENT  
 26. 1/1/2008 ADDED PROPERTY EASEMENT  
 27. 1/1/2008 ADDED PROPERTY EASEMENT  
 28. 1/1/2008 ADDED PROPERTY EASEMENT  
 29. 1/1/2008 ADDED PROPERTY EASEMENT  
 30. 1/1/2008 ADDED PROPERTY EASEMENT  
 31. 1/1/2008 ADDED PROPERTY EASEMENT  
 32. 1/1/2008 ADDED PROPERTY EASEMENT  
 33. 1/1/2008 ADDED PROPERTY EASEMENT  
 34. 1/1/2008 ADDED PROPERTY EASEMENT  
 35. 1/1/2008 ADDED PROPERTY EASEMENT  
 36. 1/1/2008 ADDED PROPERTY EASEMENT  
 37. 1/1/2008 ADDED PROPERTY EASEMENT  
 38. 1/1/2008 ADDED PROPERTY EASEMENT  
 39. 1/1/2008 ADDED PROPERTY EASEMENT  
 40. 1/1/2008 ADDED PROPERTY EASEMENT  
 41. 1/1/2008 ADDED PROPERTY EASEMENT  
 42. 1/1/2008 ADDED PROPERTY EASEMENT  
 43. 1/1/2008 ADDED PROPERTY EASEMENT  
 44. 1/1/2008 ADDED PROPERTY EASEMENT  
 45. 1/1/2008 ADDED PROPERTY EASEMENT  
 46. 1/1/2008 ADDED PROPERTY EASEMENT  
 47. 1/1/2008 ADDED PROPERTY EASEMENT  
 48. 1/1/2008 ADDED PROPERTY EASEMENT  
 49. 1/1/2008 ADDED PROPERTY EASEMENT  
 50. 1/1/2008 ADDED PROPERTY EASEMENT  
 51. 1/1/2008 ADDED PROPERTY EASEMENT  
 52. 1/1/2008 ADDED PROPERTY EASEMENT  
 53. 1/1/2008 ADDED PROPERTY EASEMENT  
 54. 1/1/2008 ADDED PROPERTY EASEMENT  
 55. 1/1/2008 ADDED PROPERTY EASEMENT  
 56. 1/1/2008 ADDED PROPERTY EASEMENT  
 57. 1/1/2008 ADDED PROPERTY EASEMENT  
 58. 1/1/2008 ADDED PROPERTY EASEMENT  
 59. 1/1/2008 ADDED PROPERTY EASEMENT  
 60. 1/1/2008 ADDED PROPERTY EASEMENT  
 61. 1/1/2008 ADDED PROPERTY EASEMENT  
 62. 1/1/2008 ADDED PROPERTY EASEMENT  
 63. 1/1/2008 ADDED PROPERTY EASEMENT  
 64. 1/1/2008 ADDED PROPERTY EASEMENT  
 65. 1/1/2008 ADDED PROPERTY EASEMENT  
 66. 1/1/2008 ADDED PROPERTY EASEMENT  
 67. 1/1/2008 ADDED PROPERTY EASEMENT  
 68. 1/1/2008 ADDED PROPERTY EASEMENT  
 69. 1/1/2008 ADDED PROPERTY EASEMENT  
 70. 1/1/2008 ADDED PROPERTY EASEMENT  
 71. 1/1/2008 ADDED PROPERTY EASEMENT  
 72. 1/1/2008 ADDED PROPERTY EASEMENT  
 73. 1/1/2008 ADDED PROPERTY EASEMENT  
 74. 1/1/2008 ADDED PROPERTY EASEMENT  
 75. 1/1/2008 ADDED PROPERTY EASEMENT  
 76. 1/1/2008 ADDED PROPERTY EASEMENT  
 77. 1/1/2008 ADDED PROPERTY EASEMENT  
 78. 1/1/2008 ADDED PROPERTY EASEMENT  
 79. 1/1/2008 ADDED PROPERTY EASEMENT  
 80. 1/1/2008 ADDED PROPERTY EASEMENT  
 81. 1/1/2008 ADDED PROPERTY EASEMENT  
 82. 1/1/2008 ADDED PROPERTY EASEMENT  
 83. 1/1/2008 ADDED PROPERTY EASEMENT  
 84. 1/1/2008 ADDED PROPERTY EASEMENT  
 85. 1/1/2008 ADDED PROPERTY EASEMENT  
 86. 1/1/2008 ADDED PROPERTY EASEMENT  
 87. 1/1/2008 ADDED PROPERTY EASEMENT  
 88. 1/1/2008 ADDED PROPERTY EASEMENT  
 89. 1/1/2008 ADDED PROPERTY EASEMENT  
 90. 1/1/2008 ADDED PROPERTY EASEMENT  
 91. 1/1/2008 ADDED PROPERTY EASEMENT  
 92. 1/1/2008 ADDED PROPERTY EASEMENT  
 93. 1/1/2008 ADDED PROPERTY EASEMENT  
 94. 1/1/2008 ADDED PROPERTY EASEMENT  
 95. 1/1/2008 ADDED PROPERTY EASEMENT  
 96. 1/1/2008 ADDED PROPERTY EASEMENT  
 97. 1/1/2008 ADDED PROPERTY EASEMENT  
 98. 1/1/2008 ADDED PROPERTY EASEMENT  
 99. 1/1/2008 ADDED PROPERTY EASEMENT  
 100. 1/1/2008 ADDED PROPERTY EASEMENT



LINE	BEARING	LENGTH
L1	S 00°00'25"W	83.93
L2	S 01°15'45"E	150.82
L3	S 02°31'15"E	150.82
L4	S 03°46'45"E	150.82
L5	S 05°02'15"E	150.82
L6	S 06°17'45"E	150.82
L7	S 07°33'15"E	150.82
L8	S 08°48'45"E	150.82
L9	S 10°04'15"E	150.82
L10	S 11°19'45"E	150.82
L11	S 12°35'15"E	150.82
L12	S 13°50'45"E	150.82
L13	S 15°06'15"E	150.82
L14	S 16°21'45"E	150.82
L15	S 17°37'15"E	150.82
L16	S 18°52'45"E	150.82
L17	S 20°08'15"E	150.82
L18	S 21°23'45"E	150.82
L19	S 22°39'15"E	150.82
L20	S 23°54'45"E	150.82
L21	S 25°10'15"E	150.82
L22	S 26°25'45"E	150.82
L23	S 27°41'15"E	150.82
L24	S 28°56'45"E	150.82
L25	S 30°12'15"E	150.82
L26	S 31°27'45"E	150.82
L27	S 32°43'15"E	150.82
L28	S 33°58'45"E	150.82
L29	S 35°14'15"E	150.82
L30	S 36°29'45"E	150.82
L31	S 37°45'15"E	150.82
L32	S 38°60'45"E	150.82
L33	S 39°16'15"E	150.82
L34	S 40°31'45"E	150.82
L35	S 41°47'15"E	150.82
L36	S 42°62'45"E	150.82
L37	S 43°78'15"E	150.82
L38	S 44°93'45"E	150.82
L39	S 45°9'15"E	150.82
L40	S 46°24'45"E	150.82
L41	S 47°40'15"E	150.82
L42	S 48°55'45"E	150.82
L43	S 50°11'15"E	150.82
L44	S 51°26'45"E	150.82
L45	S 52°42'15"E	150.82
L46	S 53°57'45"E	150.82
L47	S 55°13'15"E	150.82
L48	S 56°28'45"E	150.82
L49	S 57°44'15"E	150.82
L50	S 58°59'45"E	150.82
L51	S 60°15'15"E	150.82
L52	S 61°30'45"E	150.82
L53	S 62°46'15"E	150.82
L54	S 63°61'45"E	150.82
L55	S 64°77'15"E	150.82
L56	S 65°92'45"E	150.82
L57	S 67°8'15"E	150.82
L58	S 68°23'45"E	150.82
L59	S 69°39'15"E	150.82
L60	S 70°54'45"E	150.82
L61	S 72°10'15"E	150.82
L62	S 73°25'45"E	150.82
L63	S 74°41'15"E	150.82
L64	S 75°56'45"E	150.82
L65	S 77°12'15"E	150.82
L66	S 78°27'45"E	150.82
L67	S 79°43'15"E	150.82
L68	S 80°58'45"E	150.82
L69	S 82°14'15"E	150.82
L70	S 83°29'45"E	150.82
L71	S 84°45'15"E	150.82
L72	S 85°60'45"E	150.82
L73	S 86°76'15"E	150.82
L74	S 87°91'45"E	150.82
L75	S 88°7'15"E	150.82
L76	S 89°22'45"E	150.82
L77	S 90°38'15"E	150.82
L78	S 91°53'45"E	150.82
L79	S 93°9'15"E	150.82
L80	S 94°24'45"E	150.82
L81	S 95°40'15"E	150.82
L82	S 96°55'45"E	150.82
L83	S 98°11'15"E	150.82
L84	S 99°26'45"E	150.82
L85	S 100°42'15"E	150.82
L86	S 101°57'45"E	150.82
L87	S 103°13'15"E	150.82
L88	S 104°28'45"E	150.82
L89	S 105°44'15"E	150.82
L90	S 106°59'45"E	150.82
L91	S 108°15'15"E	150.82
L92	S 109°30'45"E	150.82
L93	S 110°46'15"E	150.82
L94	S 111°61'45"E	150.82
L95	S 112°17'15"E	150.82
L96	S 113°32'45"E	150.82
L97	S 114°48'15"E	150.82
L98	S 115°63'45"E	150.82
L99	S 116°79'15"E	150.82
L100	S 117°94'45"E	150.82

CURVE	BEARING	LENGTH	CHORD	CHORD BEARING
C1	S 00°00'25"W	83.93	83.93	S 00°00'25"W
C2	S 01°15'45"E	150.82	150.82	S 01°15'45"E
C3	S 02°31'15"E	150.82	150.82	S 02°31'15"E
C4	S 03°46'45"E	150.82	150.82	S 03°46'45"E
C5	S 05°02'15"E	150.82	150.82	S 05°02'15"E
C6	S 06°17'45"E	150.82	150.82	S 06°17'45"E
C7	S 07°33'15"E	150.82	150.82	S 07°33'15"E
C8	S 08°48'45"E	150.82	150.82	S 08°48'45"E
C9	S 10°04'15"E	150.82	150.82	S 10°04'15"E
C10	S 11°19'45"E	150.82	150.82	S 11°19'45"E
C11	S 12°35'15"E	150.82	150.82	S 12°35'15"E
C12	S 13°50'45"E	150.82	150.82	S 13°50'45"E
C13	S 15°06'15"E	150.82	150.82	S 15°06'15"E
C14	S 16°21'45"E	150.82	150.82	S 16°21'45"E
C15	S 17°37'15"E	150.82	150.82	S 17°37'15"E
C16	S 18°52'45"E	150.82	150.82	S 18°52'45"E
C17	S 20°08'15"E	150.82	150.82	S 20°08'15"E
C18	S 21°23'45"E	150.82	150.82	S 21°23'45"E
C19	S 22°39'15"E	150.82	150.82	S 22°39'15"E
C20	S 23°54'45"E	150.82	150.82	S 23°54'45"E
C21	S 25°10'15"E	150.82	150.82	S 25°10'15"E
C22	S 26°25'45"E	150.82	150.82	S 26°25'45"E
C23	S 27°41'15"E	150.82	150.82	S 27°41'15"E
C24	S 28°56'45"E	150.82	150.82	S 28°56'45"E
C25	S 30°12'15"E	150.82	150.82	S 30°12'15"E
C26	S 31°27'45"E	150.82	150.82	S 31°27'45"E
C27	S 32°43'15"E	150.82	150.82	S 32°43'15"E
C28	S 33°58'45"E	150.82	150.82	S 33°58'45"E
C29	S 35°14'15"E	150.82	150.82	S 35°14'15"E
C30	S 36°29'45"E	150.82	150.82	S 36°29'45"E
C31	S 37°45'15"E	150.82	150.82	S 37°45'15"E
C32	S 38°60'45"E	150.82	150.82	S 38°60'45"E
C33	S 39°76'15"E	150.82	150.82	S 39°76'15"E
C34	S 40°91'45"E	150.82	150.82	S 40°91'45"E
C35	S 42°7'15"E	150.82	150.82	S 42°7'15"E
C36	S 43°22'45"E	150.82	150.82	S 43°22'45"E
C37	S 44°38'15"E	150.82	150.82	S 44°38'15"E
C38	S 45°53'45"E	150.82	150.82	S 45°53'45"E
C39	S 47°9'15"E	150.82	150.82	S 47°9'15"E
C40	S 48°24'45"E	150.82	150.82	S 48°24'45"E
C41	S 49°40'15"E	150.82	150.82	S 49°40'15"E
C42	S 50°55'45"E	150.82	150.82	S 50°55'45"E
C43	S 52°11'15"E	150.82	150.82	S 52°11'15"E
C44	S 53°26'45"E	150.82	150.82	S 53°26'45"E
C45	S 54°42'15"E	150.82	150.82	S 54°42'15"E
C46	S 55°57'45"E	150.82	150.82	S 55°57'45"E
C47	S 57°13'15"E	150.82	150.82	S 57°13'15"E
C48	S 58°28'45"E	150.82	150.82	S 58°28'45"E
C49	S 59°44'15"E	150.82	150.82	S 59°44'15"E
C50	S 60°59'45"E	150.82	150.82	S 60°59'45"E
C51	S 62°15'15"E	150.82	150.82	S 62°15'15"E
C52	S 63°30'45"E	150.82	150.82	S 63°30'45"E
C53	S 64°46'15"E	150.82	150.82	S 64°46'15"E
C54	S 65°61'45"E	150.82	150.82	S 65°61'45"E
C55	S 66°77'15"E	150.82	150.82	S 66°77'15"E
C56	S 67°92'45"E	150.82	150.82	S 67°92'45"E
C57	S 69°8'15"E	150.82	150.82	S 69°8'15"E
C58	S 70°23'45"E	150.82	150.82	S 70°23'45"E
C59	S 71°39'15"E	150.82	150.82	S 71°39'15"E
C60	S 72°54'45"E	150.82	150.82	S 72°54'45"E
C61	S 74°10'15"E	150.82	150.82	S 74°10'15"E
C62	S 75°25'45"E	150.82	150.82	S 75°25'45"E
C63	S 76°41'15"E	150.82	150.82	S 76°41'15"E
C64	S 77°56'45"E	150.82	150.82	S 77°56'45"E
C65	S 79°12'15"E	150.82	150.82	S 79°12'15"E
C66	S 80°27'45"E	150.82	150.82	S 80°27'45"E
C67	S 81°43'15"E	150.82	150.82	S 81°43'15"E
C68	S 82°58'45"E	150.82	150.82	S 82°58'45"E
C69	S 84°14'15"E	150.82	150.82	S 84°14'15"E
C70	S 85°29'45"E	150.82	150.82	S 85°29'45"E
C71	S 86°45'15"E	150.82	150.82	S 86°45'15"E
C72	S 87°60'45"E	150.82	150.82	S 87°60'45"E
C73	S 88°76'15"E	150.82	150.82	S 88°76'15"E
C74	S 89°91'45"E	150.82	150.82	S 89°91'45"E
C75	S 91°7'15"E	150.82	150.82	S 91°7'15"E
C76	S 92°22'45"E	150.82	150.82	S 92°22'45"E
C77	S 93°38'15"E	150.82	150.82	S 93°38'15"E
C78	S 94°53'45"E	150.82	150.82	S 94°53'45"E
C79	S 96°9'15"E	150.82	150.82	S 96°9'15"E
C80	S 97°24'45"E	150.82	150.82	S 97°24'45"E
C81	S 98°40'15"E	150.82	150.82	S 98°40'15"E
C82	S 99°55'45"E	150.82	150.82	S 99°55'45"E
C83	S 101°11'15"E	150.82	150.82	S 101°11'15"E
C84	S 102°26'45"E	150.82	150.82	S 102°26'45"E
C85	S 103°42'15"E	150.82		